

Fontaine® Fifth Wheel Application Guide



*A useful tool to help you choose
the right fifth wheel for your
particular needs.*



FONTAINE®
FIFTH WHEEL

www.fifthwheel.com • 800-874-9780

	Page #
Important notes	3
Duty class restrictions	4
Choosing the right fifth wheel	4
Choosing the right fifth wheel – top plate styles	5
Choosing the right fifth wheel - mounting options.....	6
Applications:	
Van trailers	7
Tankers and bulk trailers.....	8
Flatbeds, stretch and stake trailers	9
Lowboy trailers	10
Frame end and frameless dump trailers.....	11
Bottom dump trailers	12

Important notes

Top plate selection notes:

- For the Fontaine Top Plate selection guide see page 5. Air activated release styles are available on the Ultra NT, 6000, 7000, and 7000CC series top plates.

Mount selection notes:

- See page 6 when choosing a Fontaine sliding mount or stationary mount for your top plate and application.
 - Stationary mount fifth wheels (plate or angle mounts) are an option and are ideal for applications where the trailer kingpin setting, axle loading and vehicle length all remain the same for the entire fleet. Stationary mount fifth wheels are usually lighter than sliding mount fifth wheels.
 - A sliding mount gives the owner more options. You can transfer weight between tractor axles, handle trailers with different kingpin settings, and vary vehicle combination lengths. A sliding mount fifth wheel also provides additional maneuverability, accommodates trailers with short landing gear clearance and allows the driver to extend the unit for maximum comfort when weight allows. If you choose a sliding mount, Fontaine offers a wide selection of slide lengths in both air activated and manual release styles. Air release is recommended for applications that require frequent adjustment. If the slide is adjusted infrequently a manual slide is recommended. The flexibility of sliding mount fifth wheels should increase the resale value of your truck.

- If any single restriction factor within your application is surpassed within a given duty level, the next duty level must be selected.
- For more information on standard, moderate and severe duty, please review the **duty class restrictions** on page 4.
- When selecting a fifth wheel, if the application or vehicle usage places the maximum capacity on a certain fifth wheel, then the selection of a fifth wheel with a higher capacity is advised. For example, a tractor that is at a maximum vertical load of 50,000 lbs in a moderate duty application should be using a fifth wheel with a vertical load capacity of 55,000 lbs or greater. This additional capacity should give better service life over a longer period of time.

Special applications:

- All logging, mining and oil field applications are considered severe duty. Do not select assemblies in the standard or moderate levels when a special application is designated.

Minimum static load warning:

- Minimum static load warning!!! The trailer that is attached to the fifth wheel should impose a consistent vertical load. Repeated negative loading (trying to pull the fifth wheel off of the brackets with the kingpin) is not allowed. A minimum static load applied to the fifth wheel through the trailer is 10% of the gross trailer weight. See the load rating for the specific fifth wheel for maximum vertical load values.

Important application notes:

Important: Contact your OEM or Fontaine Fifth Wheel for more information on the right fifth wheel for your application. Please refer to the Fontaine Fifth Wheel warranty statement for important warranty information. Selecting assemblies in conflict with this application guide without prior written approval from Fontaine engineering voids all warranties. A copy of the Fontaine service handbook is available at www.fifthwheel.com. Click "Support" and then "Helpful information".

Choosing the right fifth wheel



With the Fontaine Fifth Wheel complete product line you can easily select the perfect fifth wheel for your application. We offer top plates and mounting options in a wide variety of sizes to handle even the most demanding applications.

To specify the right fifth wheel for your application two factors must be considered: load capacity and service conditions.

“Weight” refers to the amount of weight that a fifth wheel can handle. “Road type” refers to the operating environment and the type of equipment used in an application. “Travel type” refers to mileage between stops.

As you can see from the **duty class restriction** chart and **application** charts (pages 7-12), you don’t choose a top plate based on “weight” only. Consider service conditions because a heavy load pulled on a paved road places less stress on a fifth wheel than a lighter load pulled in severe off-highway conditions.

The **duty class restriction** chart, **top plate styles** chart (page 5), **mounting options** chart (page 6) and **application** charts (pages 7-12) can be used as a guide to help you select the right fifth wheel. If you need further assistance contact Fontaine Fifth Wheel at 800-874-9780.

Duty class restrictions

Standard duty

- Weight: Less than 95,000 lbs (43,000 kgs) gross combination weight (GCW)
- Road type: 100% on-highway application on maintained concrete or asphalt roads.
- Travel type: More than 30 miles between each stop.
- Axle limitation: Maximum number of towed axles equals 2.

Moderate duty (on-highway)

- Weight: Less than 115,000 lbs (52,000 kgs) gross combination weight (GCW)
- Road type: 100% on-highway application on maintained concrete or asphalt roads.
- Travel type: No minimum mileage between stops.
- Axle limitation: Maximum number of towed axles equals 4.

Moderate duty (off-highway)

- Weight: Less than 115,000 lbs (52,000 kgs) gross combination weight (GCW)
- Road type: Less than 10% off-highway application on maintained concrete, asphalt, gravel or crushed rock roads.
- Travel type: No minimum mileage between stops.
- Axle limitation: Maximum number of towed axles equals 4.

Severe duty (on-highway)

- Weight: More than 115,000 lbs (52,000 kgs) gross combination weight (GCW)
- Road type: Less than 10% Off-Highway application on maintained concrete, asphalt, gravel or crushed rock roads.
- Travel type: No minimum mileage between stops.
- Axle limitation: No axle limitations

Severe duty (off-highway)

- Weight: More than 115,000 lbs (52,000 kgs) gross combination weight (GCW)
- Road type: Any off-highway application on all road types including non-maintained roads.
- Travel type: No minimum mileage between stops.
- Axle Limitation: No axle limitation.
- Special applications: All logging, mining and oil field applications fall into this category regardless of anticipated weight, road type or number of axles.

Choosing the right fifth Wheel – top plate styles



Ultra NT

50,000 pounds vertical load. 150,000 pounds drawbar pull.

The new Ultra NT is designed for 100% on-highway standard duty applications. The stamped steel fifth wheel features the patented self-adjusting No-Slack® locking mechanism with a positive secondary lock that can only be released by pulling the handle. A safety trigger eliminates the possibility of false couplings to prevent dangerous high hitching. The pull force required to open the lock is only 65 lbs. The Ultra NT also features savings of up to 50 lbs or more over competitive products—helps fleets offset heavy 2010 emission system components. Optional air actuation with in-cab air release (operates only when parking brake is engaged). Rated for on-highway use only, including tankers. Only weighs about 228 lbs.



Ultra LT

50,000 pounds vertical load. 150,000 pounds drawbar pull.

The new Ultra LT formed steel top plate coupled with the sleek new mounts deliver the lightest-weight fifth wheel slider system on the market today. The fifth wheel is lighter than aluminum fifth wheel slider systems—with the durability and cost-effectiveness of steel construction. You can achieve weight savings of up to 100 lbs or more over competitive products. Ultra LT features a patented lock design that eliminates the possibility of false trailer couplings to prevent dangerous high hitching.



Ultra HD

Up to 70,000 pounds vertical load and 200,000 pounds drawbar pull depending on application.

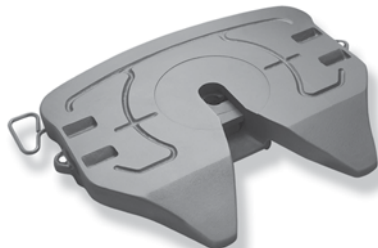
No road? No problem for the new Fontaine heavy-duty Ultra HD fifth wheel. Ultra HD takes the best features of the No-Slack® H5092 and X5092, and combines them into a single new heavy-duty top plate. The new fifth wheel is rated for severe-duty applications such as oil fields, logging, chip hauling and end dump trailers. It is also an excellent fifth wheel for applications with poor road infrastructure. The top plate fits existing Fontaine mounts, including two sliders and a number of stationary mounts. Ultra HD is also available as a blocked fifth wheel in a variety of sizes to cover more frameless dump applications than ever before. Like all Fontaine fifth wheels the Ultra HD features a patented lock design that eliminates the possibility of false trailer couplings to prevent dangerous high-hitching.



No-Slack® (6000 series)

50,000 pounds vertical load. 150,000 pounds drawbar pull.

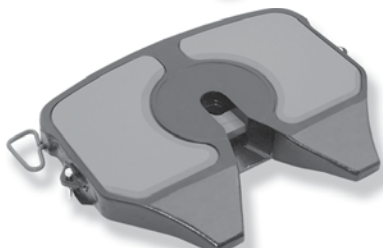
The innovative 6000 series fifth wheel is designed for standard and moderate duty applications. It features the patented self-adjusting No-Slack® locking mechanism with a positive secondary lock that can only be released by pulling the handle. A safety trigger eliminates the possibility of false couplings to prevent dangerous high hitching.



No-Slack® (7000 series)

55,000 pounds vertical load. 150,000 pounds drawbar pull.

The 7000 series offers all the benefits of our 6000 series, but in a cast design rather than pressed steel. It features the patented self-adjusting No-Slack® locking mechanism with a positive secondary lock that can only be released by pulling the handle. A safety trigger eliminates the possibility of false couplings to prevent dangerous high hitching. 7000 series is also available as a blocked fifth wheel in a variety of sizes to cover more frameless dump applications.



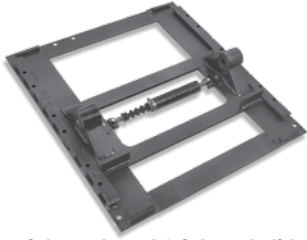
No-Slack® (7000CC series)

Clean-Connect

55,000 pounds vertical load. 150,000 pounds drawbar pull.

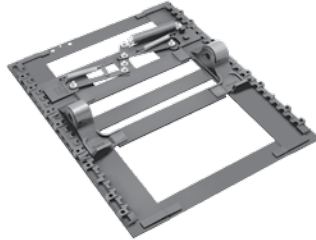
The 7000CC series Clean-Connect™ offers all the benefits of our 7000 series fifth wheels plus the added benefit of a grease free top plate surface. With Clean-Connect™ technology the fifth wheel no longer requires grease to lubricate between the top plate surface and the trailer coupling plate. This eliminates the labor costs, materials and downtime associated with greasing the top plate surface.

Choosing the right fifth wheel – mounting options



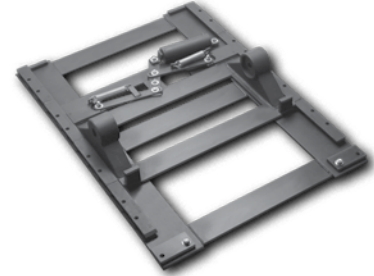
Light weight outboard & inboard slide

Model NTLWI (Ultra NT top plate)
Model NTLWO (Ultra NT top plate) (not pictured)
Model LTLWI (Ultra LT top plate)
Model LTLWO (Ultra LT top plate) (not pictured)



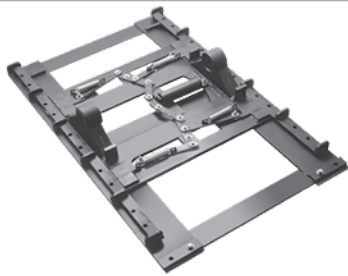
Air/manual slide bracket

Model 7ATB/7MTB (7000 top plate)
Model 6ATB/6MTB (6000 top plate)



Heavy duty air/manual slide bracket

Model 7AWB/7MWS (7000 top plate)
Model HDMWS (Ultra HD top plate)
Model HDAWB (Ultra HD top plate)



Xtra™ heavy duty air slide bracket

Model HDAWX (Ultra HD top plate)



Heavy duty blocked air/manual slide bracket*

Model BLHDAWB/BLHDMWS (Ultra HD top plate)



Stationary frame mount

Model 7FMA (7000 top plate)
Model 6FMA (6000 top plate)
Model HDFMA (Ultra HD top plate)



Bracket stationary mount

Model NTSMB (Ultra NT top plate)
Model LTSMB (Ultra LT top plate)
Model 7BSM (7000 top plate)
Model 6BSM (6000 top plate)



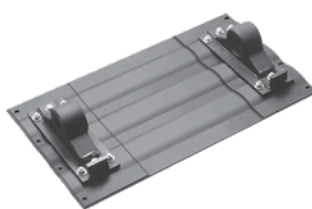
Stationary angle mount

Model 7A36 (7000 top plate)
Model 6A36 (6000 top plate)



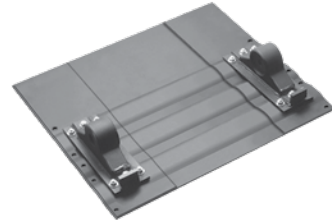
Adjustable plate mount

Model LTAPB (Ultra LT top plate)
Model NTATB (Ultra NT top plate)
Model 7PMA (7000 top plate)
Model 6PMA (6000 top plate)
Model HDPMA (Ultra HD top plate)



Reinforced stationary short plate

Model 7PS4, 7PS5 (7000 top plate)
Model HDPS4, HDPS5 (Ultra HD top plate)

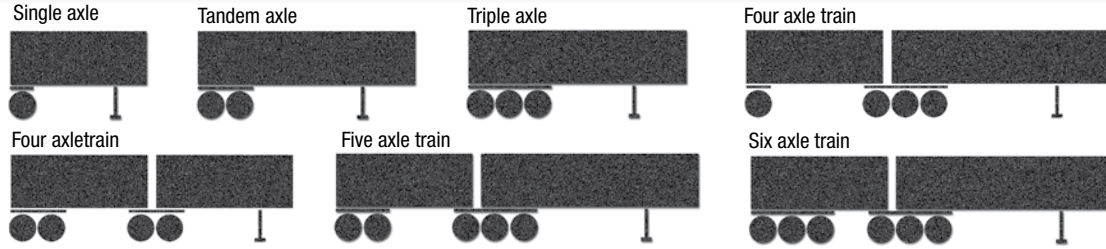


Reinforced stationary long plate

Model 7PL5 (7000 top plate)
Model HDPL5 (Ultra HD top plate)

*Blocked configurations also available in 7AWB, PL5, PS4, PS5, models.

Van trailers



Standard duty (on-highway only)	Recommended assemblies			Rated fifth wheel vertical capacity
	Top plate	Stationary lower mount	Sliding lower mount	
Examples: Single axle, tandem axle, general freight, line haul, reefer, moving van	Ultra LT series	APB, SMB	LWI, LWO	50,000 lbs. (22,680 kg.)
	Ultra NT series	APB, SMB	LWI, LWO	50,000 lbs. (22,680 kg.)
	6000 series	PMA, A36, FMA, BSM	ATB, MTB	50,000 lbs. (22,680 kg.)
	7000 series	PMA, A36, FMA, BSM, PL5, PS4, PS5	ATB, MTB	55,000 lbs. (24,948 kg.)
	7000CC series	PMA, A36, FMA, BSM, PL5, PS4, PS5	ATB, MTB	55,000 lbs. (24,948 kg.)

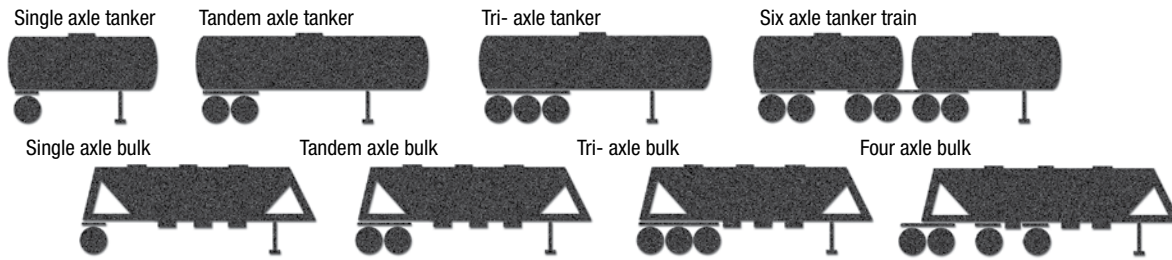
Moderate duty (on-highway)	Recommended assemblies			Rated fifth wheel vertical capacity
	Top plate	Stationary lower mount	Sliding lower mount	
Examples: Vans up to 4 axles	6000 series	PMA, A36, FMA, BSM	ATB, MTB	50,000 lbs. (22,680 kg.)
	7000 series	PMA, A36, FMA, BSM, PL5, PS4, PS5	ATB, MTB	55,000 lbs. (24,948 kg.)
	7000CC series	PMA, A36, FMA, BSM, PL5, PS4, PS5	ATB, MTB	55,000 lbs. (24,948 kg.)
	Ultra HD series	PMA	AWB, MWS	62,500 lbs. (28,350 kg.)
	Ultra HD series	PL5, PS4, PS5	AWX	70,000 lbs. (31,752 kg.)

Moderate duty (off-highway)	Recommended assemblies			Rated fifth wheel vertical capacity
	Top plate	Stationary lower mount	Sliding lower mount	
Examples: Vans up to 4 axles	7000 series	FMA, PL5, PS4, PS5	AWB, MWS	55,000 lbs. (24,948 kg.)
	Ultra HD series	—	AWB, MWS	62,500 lbs. (28,350 kg.)
	Ultra HD series	PL5, PS4, PS5	AWX	70,000 lbs. (31,752 kg.)

Severe duty (on-highway)	Recommended assemblies			Rated fifth wheel vertical capacity
	Top plate	Stationary lower mount	Sliding lower mount	
Examples: 5 or more axles	7000 series	PL5, PS4, PS	AWB, MWS	55,000 lbs. (24,948 kg.)
	Ultra HD series	—	AWB, MWS	62,500 lbs. (28,350 kg.)
	Ultra HD series	PL5, PS4, PS	AWX	70,000 lbs. (31,752 kg.)

Severe duty (off-highway)	Recommended assemblies			Rated fifth wheel vertical capacity
	Top plate	Stationary lower mount	Sliding lower mount	
Examples: 5 or more axles	Ultra HD series	PL5, PS4, PS	AWX	70,000 lbs. (31,752 kg.)

Tankers & bulk trailers



Standard duty (on-highway only)	Recommended assemblies			Rated fifth wheel vertical capacity
	Top plate	Stationary lower mount	Sliding lower mount	
Examples: Single axle, tandem axle	Ultra LT series	APB, SMB	LWI, LWO	50,000 lbs. (22,680 kg.)
	Ultra NT series	APB, SMB	LWI, LWO	50,000 lbs. (22,680 kg.)
	6000 series	PMA, A36, FMA, BSM	ATB, MTB	50,000 lbs. (22,680 kg.)
	7000 series	PMA, A36, FMA, BSM, PL5, PS4, PS5	ATB, MTB	55,000 lbs. (24,948 kg.)
	7000CC series	PMA, A36, FMA, BSM, PL5, PS4, PS5	ATB, MTB	55,000 lbs. (24,948 kg.)

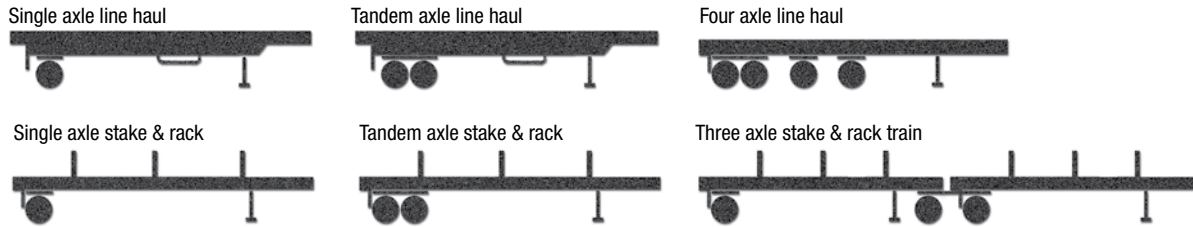
Moderate duty (on-highway)	Recommended assemblies			Rated fifth wheel vertical capacity
	Top plate	Stationary lower mount	Sliding lower mount	
Examples: Tri-axle, up to four axle trains	6000 series	PMA, A36, FMA, BSM	ATB, MTB	50,000 lbs. (22,680 kg.)
	7000 series	PMA, A36, FMA, BSM, PL5, PS4, PS5	ATB, MTB	55,000 lbs. (24,948 kg.)
	7000CC series	PMA, A36, FMA, BSM, PL5, PS4, PS5	ATB, MTB	55,000 lbs. (24,948 kg.)
	Ultra HD series	PMA	AWB, MWS	62,500 lbs. (28,350 kg.)
	Ultra HD series	FMA, PL5, PS4, PS5	AWX	70,000 lbs. (31,752 kg.)

Moderate duty (off-highway)	Recommended assemblies			Rated fifth wheel vertical capacity
	Top plate	Stationary lower mount	Sliding lower mount	
Examples: Tri-axle, up to four axle trains	7000 series	FMA, PS4, PS5	AWB, MWS	55,000 lbs. (24,948 kg.)
	Ultra HD series	—	AWB, MWS	62,500 lbs. (28,350 kg.)
	Ultra HD series	PL5, PS4, PS5	AWX	70,000 lbs. (31,752 kg.)

Severe duty (on-highway)	Recommended assemblies			Rated fifth wheel vertical capacity
	Top plate	Stationary lower mount	Sliding lower mount	
Examples: More than tri-axle, 5 or more axle trains	7000 series	PL5, PS4, PS5	AWB, MWS	55,000 lbs. (24,948 kg.)
	Ultra HD series	—	AWB, MWS	62,500 lbs. (28,350 kg.)
	Ultra HD series	PL5, PS4, PS5	AWX	70,000 lbs. (31,752 kg.)

Severe duty (off-highway)	Recommended assemblies			Rated fifth wheel vertical capacity
	Top plate	Stationary lower mount	Sliding lower mount	
Examples: More than tri-axle, 5 or more axle trains, all oil field applications	Ultra HD series	PL5, PS4, PS5	AWX	70,000 lbs. (31,752 kg.)

Flatbeds, stretch and stake trailers



Standard duty (on-highway only)	Recommended assemblies			Rated fifth wheel vertical capacity
	Top plate	Stationary lower mount	Sliding lower mount	
Examples: Single axle, tandem axle, line haul, stake & rack trailers	Ultra NT series	APB, SMB	LWI, LWO	50,000 lbs. (22,680 kg.)
	6000 series	PMA, A36, FMA, BSM	ATB, MTB	50,000 lbs. (22,680 kg.)
	Ultra LT series	APB, SMB	LWI, LWO	50,000 lbs. (22,680 kg.)
	7000 series	PMA, A36, FMA, BSM, PL5, PS4, PS5	ATB, MTB	55,000 lbs. (24,948 kg.)
	7000CC series	PMA, A36, FMA, BSM, PL5, PS4, PS5	ATB, MTB	55,000 lbs. (24,948 kg.)

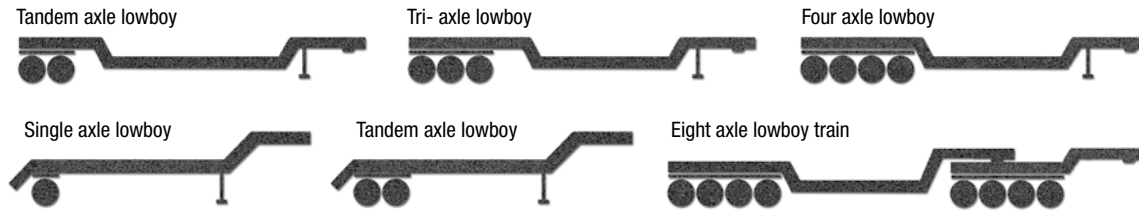
Moderate duty (on-highway)	Recommended assemblies			Rated fifth wheel vertical capacity
	Top plate	Stationary lower mount	Sliding lower mount	
Examples: Tri-axle, up to four axle trains	6000 series	PMA, FMA	ATB, MTB	50,000 lbs. (22,680 kg.)
	7000 series	PMA, FMA, PL5, PS4, PS5	ATB, MTB	55,000 lbs. (24,948 kg.)
	Ultra HD series	PMA	AWB, MWS	62,500 lbs. (28,350 kg.)
	Ultra HD series	FMA, PL5, PS4, PS5	AWX	70,000 lbs. (31,752 kg.)

Moderate duty (off-highway)	Recommended assemblies			Rated fifth wheel vertical capacity
	Top plate	Stationary lower mount	Sliding lower mount	
Examples: Tri-axle, up to four axle trains	7000 series	FMA, PL5, PS4, PS5	AWB, MWS	55,000 lbs. (24,948 kg.)
	Ultra HD series	—	AWB, MWS	62,500 lbs. (28,350 kg.)
	Ultra HD series	PL5, PS4, PS5	AWX	70,000 lbs. (31,752 kg.)

Severe duty (on-highway)	Recommended assemblies			Rated fifth wheel vertical capacity
	Top plate	Stationary lower mount	Sliding lower mount	
Examples: More than tri-axle, 5 or more axle trains	7000 series	PL5, PS4, PS5	AWB, MWS	55,000 lbs. (24,948 kg.)
	Ultra HD series	—	AWB, MWS	62,500 lbs. (28,350 kg.)
	Ultra HD series	PL5, PS4, PS5	AWX	70,000 lbs. (31,752 kg.)

Severe duty (off-highway)	Recommended assemblies			Rated fifth wheel vertical capacity
	Top plate	Stationary lower mount	Sliding lower mount	
Examples: More than tri-axle, 5 or more axle trains	Ultra HD series	PL5, PS4, PS5	AWX	70,000 lbs. (31,752 kg.)

Lowboy trailers

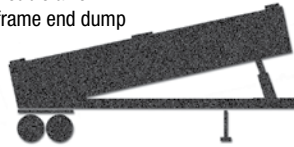


Moderate duty (on / off-highway)	Recommended assemblies			Rated fifth wheel vertical capacity
	Top plate	Stationary lower mount	Sliding lower mount	
Examples: Single, tandem and tri-axle, up to four axle trains	7000 series	PMA, FMA, PL5, PS4, PS5	AWB, MWS	55,000 lbs. (24,948 kg.)
	Ultra HD series	PMA	AWB, MWS	62,500 lbs. (28,350 kg.)

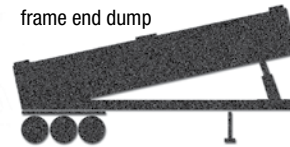
Severe duty (on / off-highway)	Recommended assemblies			Rated fifth wheel vertical capacity
	Top plate	Stationary lower mount	Sliding lower mount	
Examples: More than tri-axle, 5 or more axle trains	Ultra HD series	PS4, PS5, PL5	AWX	70,000 lbs. (31,752 kg.)

Framed end and frameless dump trailers

Double axle
frame end dump



Tri-axle
frame end dump



Framed end dump trailers

Moderate duty (on-highway)	Recommended assemblies			Rated fifth wheel vertical capacity
	Top plate	Stationary lower mount	Sliding lower mount	
Examples: Single axle, tandem axle	7000 series	PMA, FMA, PL5, PS4, PS5	AWB, MWS	55,000 lbs. (24,948 kg.)
	Ultra HD series	—	AWB, MWS	62,500 lbs. (28,350 kg.)
	Ultra HD series	PL5, PS4, PS5	AWX	70,000 lbs. (31,752 kg.)

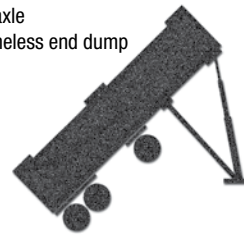
Moderate duty (off-highway)	Recommended assemblies			Rated fifth wheel vertical capacity
	Top plate	Stationary lower mount	Sliding lower mount	
Examples: Single, tandem, tri-axle	7000 series	PL5, PS4, PS5	AWB, MWS	55,000 lbs. (24,948 kg.)
	Ultra HD series	—	AWB, MWS	62,500 lbs. (28,350 kg.)
	Ultra HD series	PL5, PS4, PS5	AWX	70,000 lbs. (31,752 kg.)

Severe duty (on / off-highway)	Recommended assemblies			Rated fifth wheel vertical capacity
	Top plate	Stationary lower mount	Sliding lower mount	
Examples: More than tri-axle	Ultra HD series	PL5, PS4, PS5	AWX	70,000 lbs. (31,752 kg.)

Single axle
frameless end dump



Tri-axle
frameless end dump



Frameless end dump trailers

Moderate duty (on / off-highway)	Recommended assemblies			Rated fifth wheel vertical capacity
	Top plate	Stationary lower mount	Sliding lower mount	
Examples: Single axle, tandem axle	Blocked 7000 series	—	AWB, MWS	55,000 lbs. (24,948 kg.)

Severe duty (on / off-highway)	Recommended assemblies			Rated fifth wheel vertical capacity
	Top plate	Stationary lower mount	Sliding lower mount	
Examples: Single, tandem, tri-axle	Blocked Ultra HD series	PS4, PS5, PL5	AWB, MWS	62,500 lbs. (28,350 kg.)

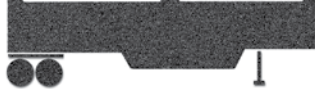
Bottom dump trailers



Single axle bottom end dump



Tandem axle bottom end dump



Tri-axle bottom end dump



Moderate duty (on-highway)	Recommended assemblies			Rated fifth wheel vertical capacity
	Top plate	Stationary lower mount	Sliding lower mount	
Examples Single, tandem, tri-axle, up to four axle trains	7000 series	PMA, FMA, PL5, PS4, PS5	ATB, MTB	55,000 lbs. (24,948 kg.)
	Ultra HD series	PMA	AWB, MWS	62,500 lbs. (28,350 kg.)
	Ultra HD series	FMA, PS4, PS5	AWX	70,000 lbs. (31,752 kg.)

Moderate duty (off-highway)	Recommended assemblies			Rated fifth wheel vertical capacity
	Top plate	Stationary lower mount	Sliding lower mount	
Examples: Tri-axle, up to four axle trains	7000 series	FMA, PL5, PS4, PS5	AWB, MWS	55,000 lbs. (24,948 kg.)
	Ultra HD series	—	AWB, MWS, AWX	62,500 lbs. (28,350 kg.)
	Ultra HD series	PS4, PS5	AWX	70,000 lbs. (31,752 kg.)

Severe duty (on-highway)	Recommended assemblies			Rated fifth wheel vertical capacity
	Top plate	Stationary lower mount	Sliding lower mount	
Examples: More than tri-axle, 5 or more axle trains	7000 series	FMA, PL5, PS4, PS5	AWB, MWS	55,000 lbs. (24,948 kg.)
	Ultra HD series	—	AWB, MWS, AWX	62,500 lbs. (28,350 kg.)
	Ultra HD series	PL5, PS4, PS5	AWX	70,000 lbs. (31,752 kg.)

Severe duty (off-highway)	Recommended assemblies			Rated fifth wheel vertical capacity
	Top plate	Stationary lower mount	Sliding lower mount	
Examples: More than tri-axle, 5 or more axle trains, all mining applications	Ultra HD series	PL5, PS4, PS5	AWX	70,000 lbs. (31,752 kg.)



Fontaine Fifth Wheel • 7574 Commerce Circle • Trussville, AL 35173
800-874-9780 • Fax: 205-655-9982

www.fifthwheel.com